



KEN HYGIENE SYSTEMS



INTELLIGENT DISINFECTION

Equipment

for KEN IQ Healthcare Series



ZiRBUS
TECHNOLOGY



INTELLIGENT SOLUTIONS

- The Future of Effective Disinfection



Equipment for KEN IQ3, IQ4, IQ5 and IQ6

The large range of flexible equipment available for the KEN IQ series is designed to meet the requirements for washing and disinfection of instruments and equipment in hospitals.

Our IQ series is the obvious choice for washing, disinfection and drying in healthcare facilities. Find all the available equipment for the IQ series in this catalogue.

It is possible to combine the various equipment to suit your specific needs. The combination of equipment makes it possible to wash and disinfect all types of instruments and equipment.

You are always welcome to contact KEN HYGIENE SYSTEMS for more information about our products or our equipment.

IQ3

| | |
|----------------------------|---------|
| "IQ3 RACKS AND SHELVES" | PAGE 3 |
| "IQ3 MODULES AND SUPPORTS" | PAGE 6 |
| "IQ3 DISTRIBUTORS" | PAGE 7 |
| "IQ3 INJECTORS & NOZZLES" | PAGE 10 |
| "IQ3 OTHER ACCESSORIES" | PAGE 13 |

IQ4

| | |
|---------------------------|---------|
| "IQ4 RACKS" | PAGE 14 |
| "IQ4 MODULES AND SUPPORT" | PAGE 16 |
| "IQ4 DISTRIBUTORS" | PAGE 20 |
| "IQ4 INJECTORS & NOZZLES" | PAGE 23 |
| "IQ4 OTHER ACCESSORIES" | PAGE 26 |
| "IQ4 TROLLEY" | PAGE 28 |

IQ5

| | |
|---------------------------|---------|
| "IQ5 RACKS" | PAGE 29 |
| "IQ5 MODULES AND SUPPORT" | PAGE 35 |
| "IQ5 DISTRIBUTORS" | PAGE 39 |
| "IQ5 INJECTORS & NOZZLES" | PAGE 41 |
| "IQ5 OTHER ACCESSORIES" | PAGE 47 |
| "IQ5 TROLLEYS" | PAGE 49 |

IQ6

| | |
|---------------------------|---------|
| "IQ6 RACKS" | PAGE 50 |
| "IQ6 MODULES AND SUPPORT" | PAGE 55 |
| "IQ6 DISTRIBUTORS" | PAGE 59 |
| "IQ6 INJECTORS & NOZZLES" | PAGE 61 |
| "IQ6 OTHER ACCESSORIES" | PAGE 67 |
| "IQ6 TROLLEYS" | PAGE 70 |

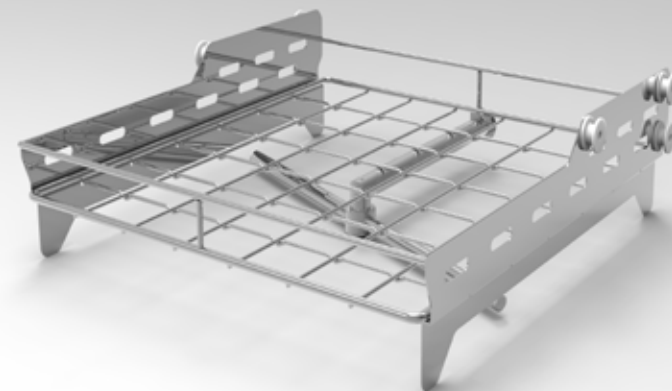
"Packages"

| |
|---------|
| PAGE 72 |
|---------|

IQ3 RACKS AND SHELVES

The racks and shelves for KEN IQ3 is designed in stainless steel. It is fitted with a top load indicator, so that the equipment is not damaged when it is pushed into the washing chamber.

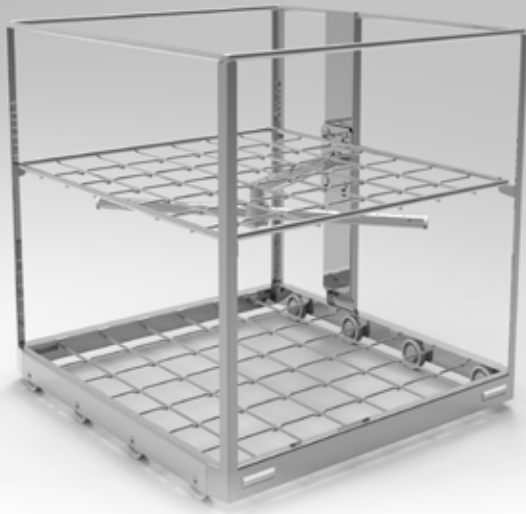
It is aligned with 8 wheels that ensure a smooth, silent and safe transportation in and out of the washing chamber.



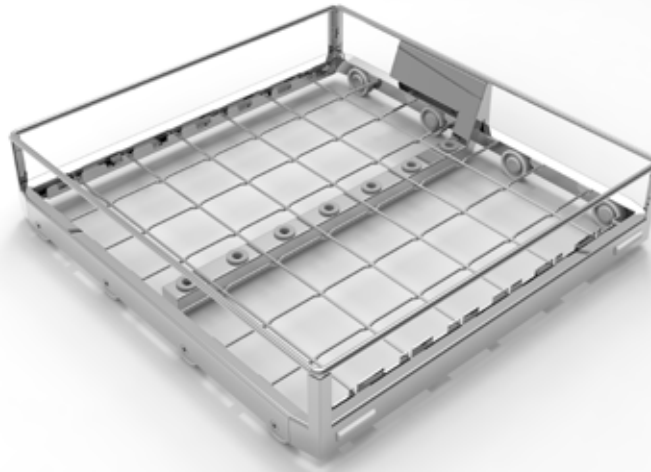
BASIC RACK
Upper level basic shelf
ref. 2938012



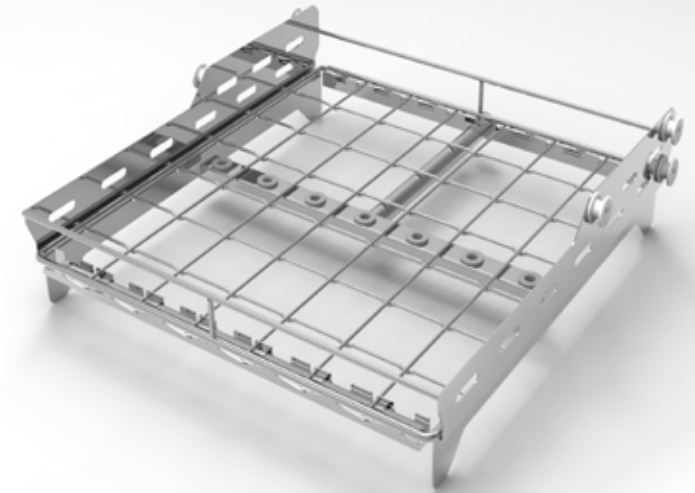
BASIC RACK
Basic lower level shelf: for rack 1 level
ref. 2938093



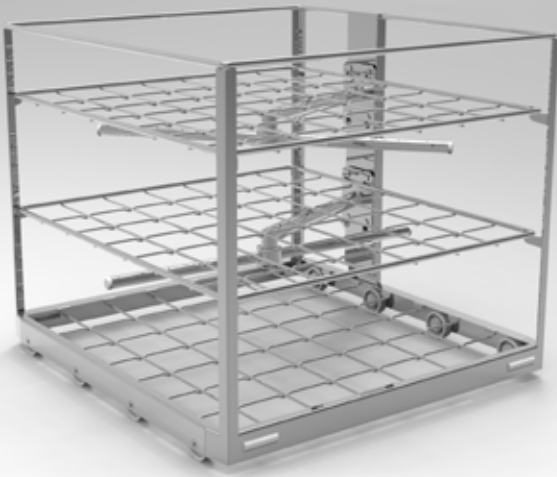
FLEXIBLE RACK
for washing in 2 levels
ref. 2938090



LOWER LEVEL RACK FOR DISTRIBUTORS
ref. 2938113



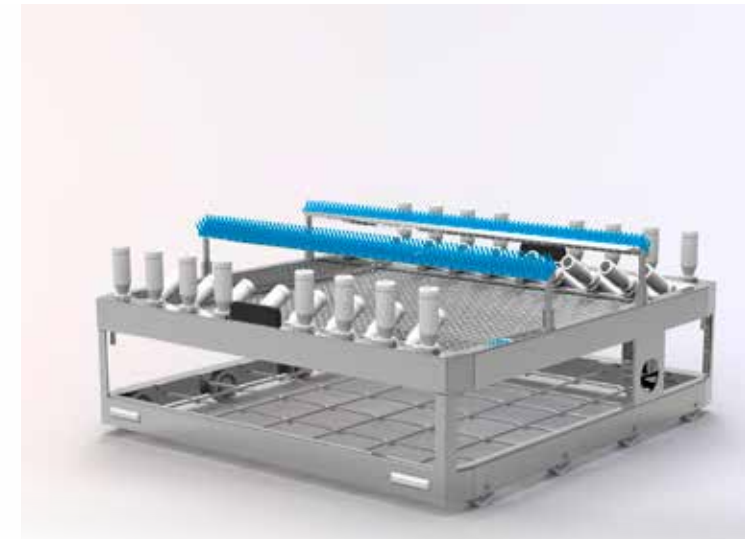
LOWER LEVEL SHELF FOR DISTRIBUTORS
ref. 2938114



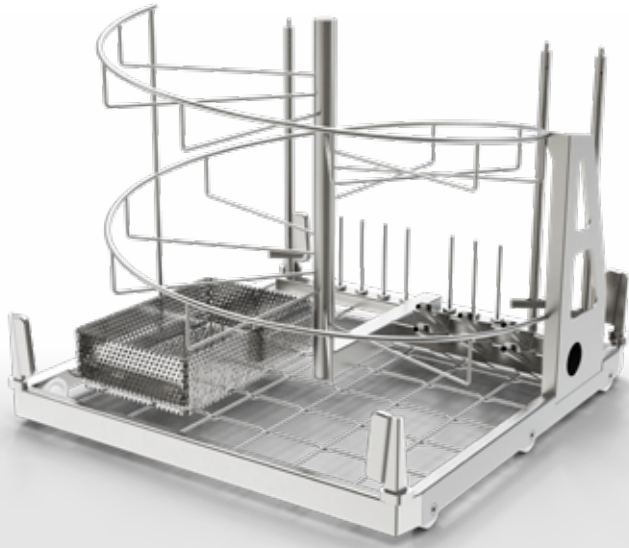
FLEXIBLE RACK
for washing in 3 levels
ref. 2938069



FLEXIBLE RACK
for washing in 4 levels
ref. 2938074



MIS RACK
Standard complete
ref. 2938115



RACK FOR ANAESTHESIA

Rack for anaesthesia equipment
ref. 2938116



LOWER LEVEL SHELF
For large washing bowls

Lower level for large wash bowl. For optimal loading and cleaning of up to 5 large wash bowls (diameter Ø345 mm). Fits under Top shelf for kidney dishes and similar.
ref. 2938165



TOP SHELF
For kidney dishes

Top shelf for kidney dishes and similar. For optimal loading and cleaning of e.g. lightweight kidney dishes and utensils. Fits over rack for large wash bowls.
ref. 2938168

IQ3 MODULES AND SUPPORTS

The modules for the base rack are designed for the general or specific need. The idea of using modules for the base rack is to avoid heavy lifting and thus ensure the best possible ergonomic work environment for the user.

Furthermore, The modular system also creates a great flexibility in terms of changing to a different load of goods. Furthermore the modular system ensures that you can easily adapt to the future if you should have a change in the daily routines.



INSERT FOR OP SHOES
10 pcs.

Support for 10 pcs. of OP shoes. Up to 2 inserts per load (2 levels). Fits in both racks and extenable shelves. ref. 2938164



INSERT FOR 4 WASHING BOWLS
2 per level for 5 and 4 levels flexible rack
ref. 2908228



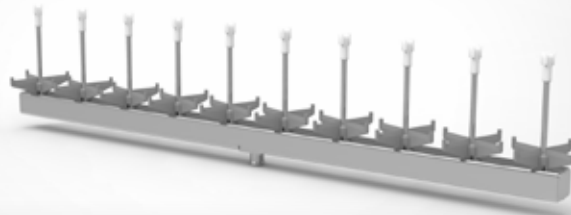
INSERT FOR 6 KIDNEY BOWLS
2 per level for 5 and 4 levels flexible rack
ref. 2908239

IQ3 DISTRIBUTORS

The distributors are designed to provide optimum flexibility. It comes in two types; Either with fixed spikes or with threaded connections for holders.

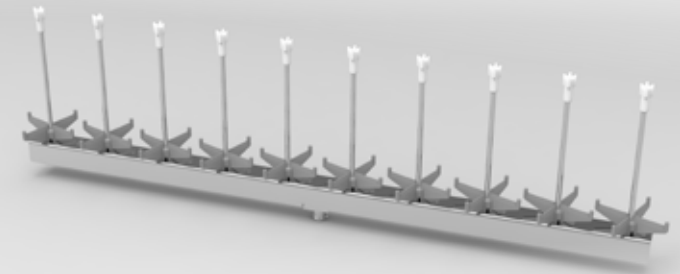
The flexibility makes it easy to adapt to a variety of different goods. Unlike other racks you only need to change or apply one or maybe two distributors and your interior rack design changes completely. This is easily done and without heavy lifting of any kind.

Also, the hospital saves a lot of storage space, as the rack design is so flexible. Thus you only need one rack and a few extra distributors to accommodate a great variety of surgical instruments and other equipment.



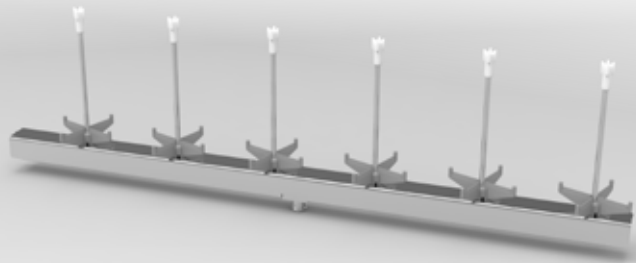
DISTRIBUTOR UNIT
10 x 60 mm. fixed injectors

Distributor unit with 10 x 60 mm.
fixed injectors. Injector position
spread: 52 mm.
ref. 2938121



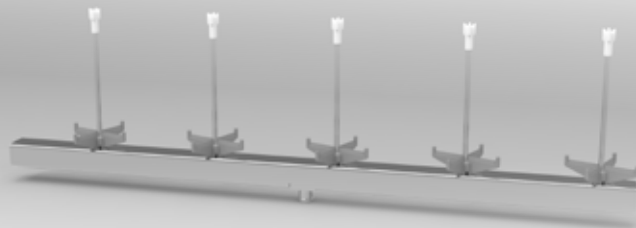
DISTRIBUTOR UNIT
10 x 95 mm. fixed injectors

Distributor unit with 10 x 95 mm.
fixed injectors. Injector position
spread: 52 mm.
ref. 2938122



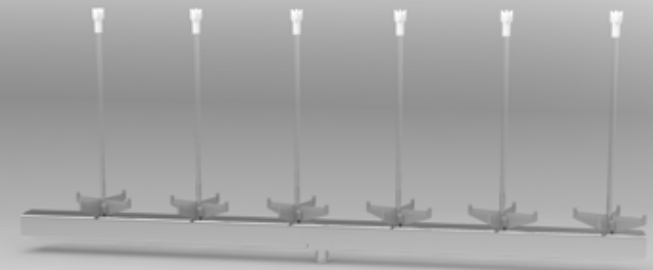
DISTRIBUTOR UNIT
6 x 95 mm. fixed injectors

Distributor unit with 6 x 95 mm.
fixed injectors. Injector position
spread: 81 mm.
ref. 2938123



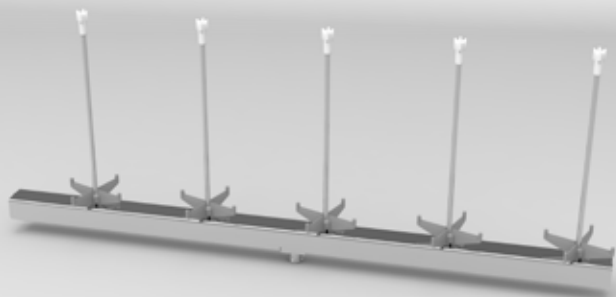
DISTRIBUTOR UNIT
5 x 95 mm. fixed injectors

Distributor unit with 5 x 95 mm.
fixed injectors. Injector position
spread: 99,3 mm.
ref. 2938124



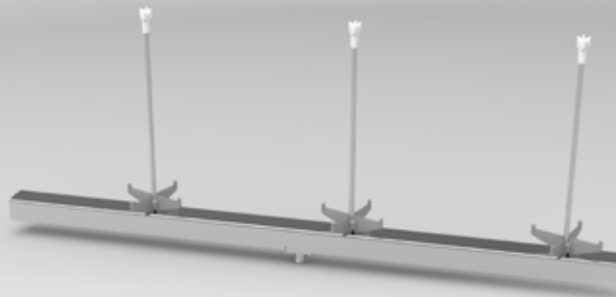
DISTRIBUTOR UNIT
6 x 150 mm. fixed injectors

Distributor unit with 6 x 150 mm.
fixed injectors. Injector position
spread: 81 mm.
ref. 2938125



DISTRIBUTOR UNIT
5 x 150 mm. fixed injectors

Distributor unit with 5 x 150 mm.
fixed injectors. Injector position
spread: 99,3 mm.
ref. 2938126



DISTRIBUTOR UNIT
3 x 150 mm. fixed injectors

Distributor unit with 3 x 150 mm.
fixed injectors. Injector position
spread: 165 mm.
ref. 2938127



DISTRIBUTOR UNIT
3 x threaded connections
151 mm distance

Distributor unit (excl. injectors):
3 x threaded connections.
Spread: 165 mm. ref. 2938128
Spread: 151 mm. ref. 2938129

IQ3 INJECTORS & NOZZLES

KEN HYGIENE SYSTEMS offers a wide range of injectors and nozzles.

Along with our new range of Washer Disinfectors, we have gathered years of know-how and redeveloped a range of injectors and nozzles that covers the need for reprocessing of cannulated instruments.

Further the injectors and nozzles are now made as plug-in type which makes it very easy for the users to change the setup in the rack. Also we have changed, where possible, the materials from stainless to a softer material in order to protect the instruments. Take a look at the following pages and feel free to contact us if any questions.



INJECTOR SPIKES Ø4

Injector spikes for tubes Ø4 for Anaesthesia rack.
ref. 2908255



SPIKE FOR RESPIRATOR

Spike (screw) for respirator bellow for Anaesthesia rack.
ref. 2908265



INJECTOR NOZZLE
Ø2,6

Injector nozzle Ø2,6 Length 50
mm. for MIS rack and modules.
ref. 2908441



INJECTOR NOZZLE
CLOSED

Injector nozzle Ø4 closed top.
Length 120 mm. for MIS rack
and modules.
ref. 2908426



INJECTOR NOZZLE
OPEN

Injector nozzle Ø4 open top.
Length 120 mm. for MIS rack
and modules.
ref. 2908428

1



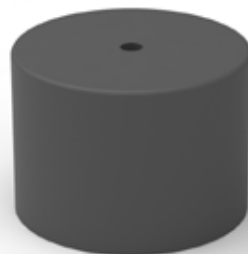
2



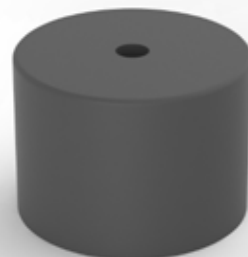
3



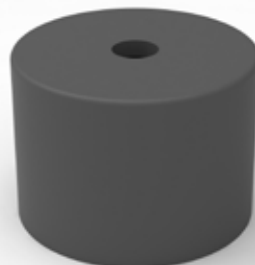
4



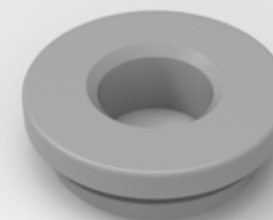
5



6



7



8



9



1. Blindplug. ref. 7610777
2. Caps for basic nozzle Ø3-Ø8. ref. 2900802
3. Caps for basic nozzle Ø6-Ø11. ref. 2900803

4. Caps for basic nozzle Ø2. ref. 2900804
5. Caps for basic nozzle Ø3. ref. 2900805
6. Caps for basic nozzle Ø4. ref. 2900806

7. Grommet for connecting MIS-nozzles injectors. ref. 2900811
8. Basic nozzle, long, for tubular instruments. ref. 2900807
9. Basic nozzle, short, for tubular instruments. ref. 2900808

IQ3 OTHER ACCESSORIES

KEN HYGIENE SYSTEMS is always developing and adapting to the world surrounding us. Therefore we have a continuous development of accessories. To the right you will find the most common and likely to be of your interest.

We strive to always be up to date with our product range. We are always designing our accessories to be compatible with existing holders and spikes. If in any doubt, please do not hesitate to seek out counselling and contact our experts at KEN HYGIENE SYSTEMS or partners.

1



2



3

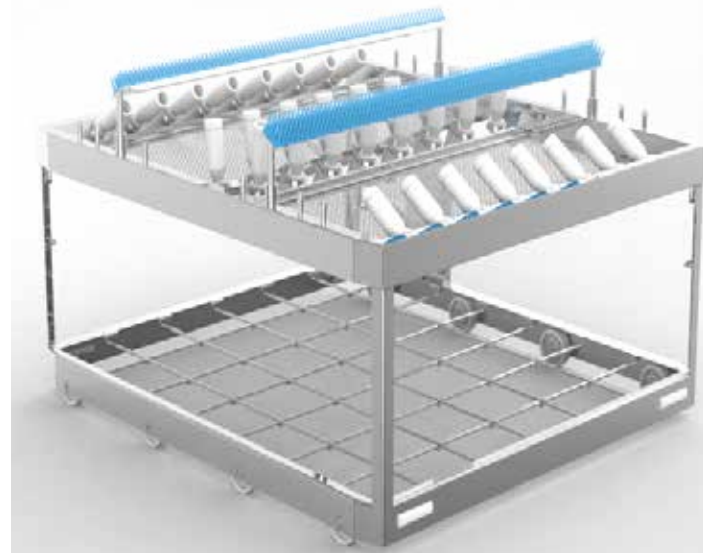


1. Kit for instruments support. ref. 2908554
2. Loading/Unloading arm for racks.
"Assistant" for loading and unloading.
ref. 2908556
3. Spring clip for ventilation bag
injetor ref. 2191400

IQ4 RACKS

The rack for KEN IQ4 is designed in stainless steel. It is fitted with a top load indicator, so that the equipment is not damaged when it is pushed into the washing chamber.

It is aligned with 8 wheels that ensures a smooth, silent and safe transportation in and out of the washing chamber.



MIS RACK STANDARD

MIS rack standard incl. 32 basic
nozzles and 16 silicone tubes.
ref. 2928687



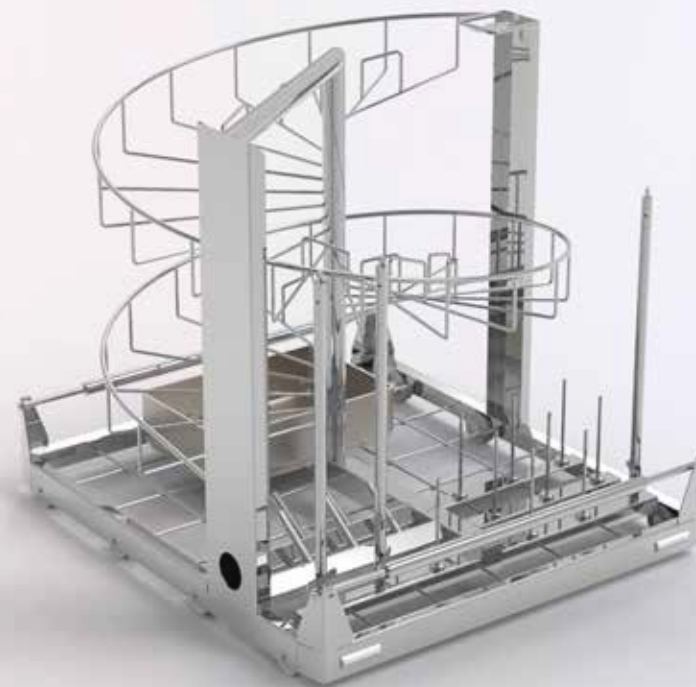
Flexible rack 2 level. ref. 2928677



Flexible rack. 4 level. ref. 2928682



Flexible rack. 3 level. ref. 2928464



ANAESTHESIA RACK. Complete. ref 2928689



IQ4 MODULES AND SUPPORT

The modules for the base rack are designed for the general or specific need. The idea of using modules for the base rack is to avoid heavy lifting and thus ensure the best possible ergonomic work environment for the user. The modular system also creates a great flexibility in terms of changing to a different load of goods.

Furthermore the modular system ensures that you can easily adapt to the future if you should have a change in the daily routines.



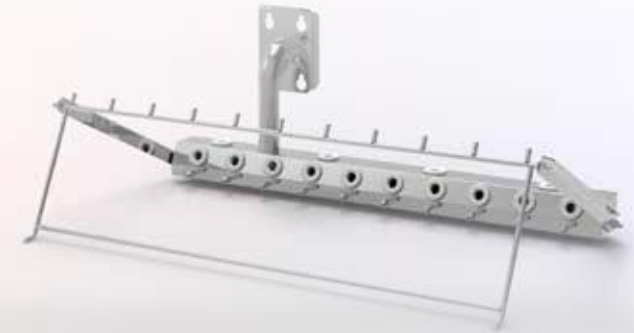
**KIT FOR CLEANING
POWER TOOLS**

Kit for cleaning power tools
Stryker or Colibri for MIS rack
ref. 2908314



MIS MODULE
24 connections for 5 level racks

MIS module 24 connections
w/o nozzles for 4 levels rack
14 nozzles to be defined.
ref. 2908375



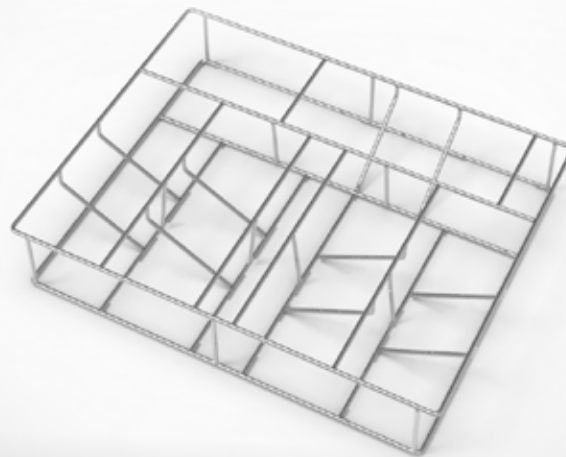
MIS MODULE
24 connections for 3 level racks

MIS module 24 connections
w/o nozzles for 3 levels rack
14 nozzles to be defined.
ref. 2908486



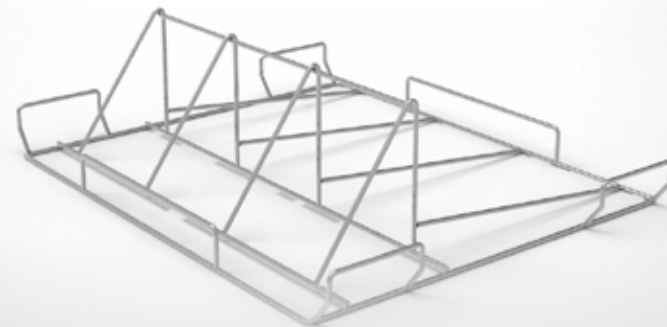
FINE FILTER MODULE
For Dental and Ophthal units

Fine filter module for Dental and Ophthal units w/o units for 4 levels rack.
ref. 2908539



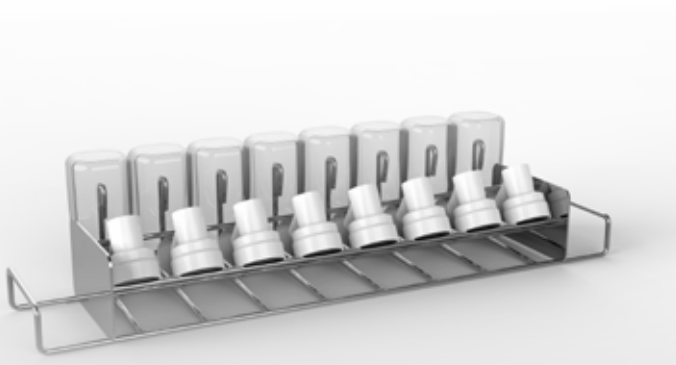
SUPPORT WASHING BOWLS
For 5 washing bowls

Support for 5 washing bowls. Ø345 and H125 mm.
ref. 2928623



SUPPORT CONTAINER

Support for 1 container and 1 lid.
ref. 2928621



SUPPORT BREAST PUMP

For 8 bottles

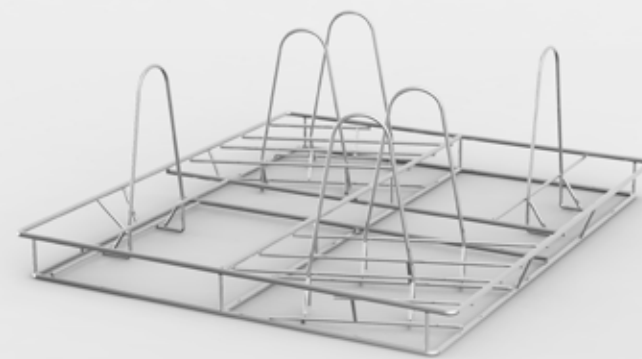
Support for breast pumps for 8 bottles.
ref. 2928066



SUPPORT OP-SHOES

12 pcs for 2 and 3 level racks

Support for 12 pcs OP-shoes, 1 per level for 2 and 3 levels rack.
ref. 2928247



SUPPORT BASKET

For 6 washing bowls

Support for 6 washing bowls for 2, 3 and 4 levels racks.
ref. 2928228

IQ4 DISTRIBUTORS

The distributors are designed to give optimum flexibility. It comes in two types. Either with fixed spikes or with threaded connections for holders. This gives the possibility to optimize the flexibility.

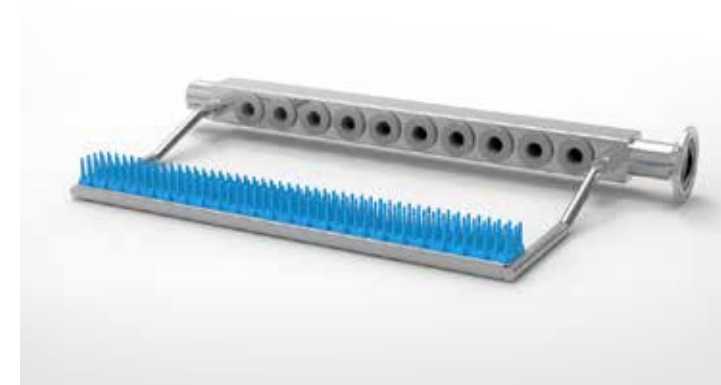
The flexibility makes it easy to adapt to a great variety of different goods. Unlike other racks, you only change or apply one or maybe two distributors and your interior rack design changes completely. This procedure is easily done and without heavy lifting of any kind.

Furthermore the hospital saves a lot of storage space, as the rack design is so flexible. Thus you only need one rack and a few extra distributors to be able to accommodate a great variety of surgical instruments and other equipment.



OPHTHAL UNIT
2 units per module

Ophthal unit for 2908539. 2 units per module. ref. 2908519



MIS UNIT
10 connections

MIS unit for fine filter module. 10 connections w/o nozzles. 2 units per module. ref. 2908640



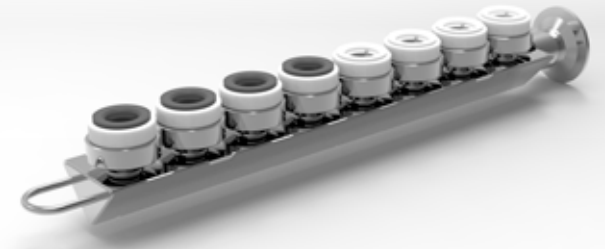
DENTAL UNIT
8 pcs Ø16

Dental unit for 2908539. 8 pcs Ø16
adapters. 2 units per module.
ref. 2908432



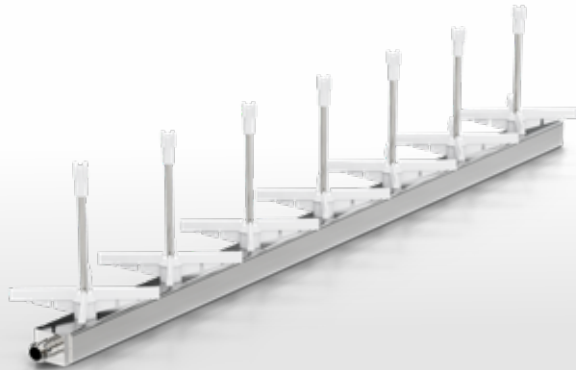
DENTAL UNIT
8 pcs Ø20

Dental unit for 2908539. 8 pcs Ø20
adapters. 2 units per module.
ref. 2908506



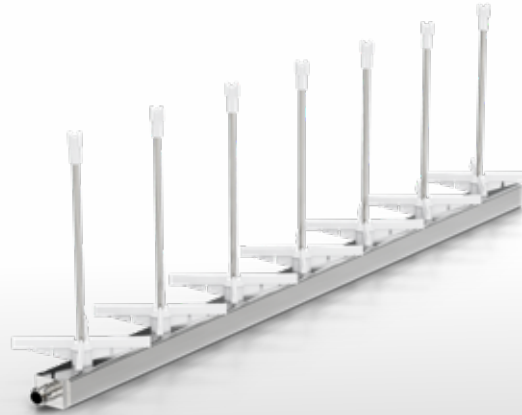
DENTAL UNIT
4 pcs Ø16, 4 pcs Ø20

Dental unit for 2908539. 8 pcs Ø20
adapters. 2 units per module.
ref. 2908508



DISTRIBUTOR
7x100mm fixed spikes

Distributor with 7x100mm fixed spikes for baby bottles small for rack 2928698.
ref. 2928355



DISTRIBUTOR
7x160mm fixed spikes

Distributor with 7x160mm fixed spikes for baby bottles 250 mm for rack 2928698.
ref. 2928618



IQ4 INJECTORS & NOZZLES

KEN HYGIENE SYSTEMS offers a wide range of injectors and nozzles.

Along with our new range of Washer Disinfectors, we have gathered years of know-how and redeveloped our range of injectors and nozzles to cover the need for reprocessing cannulated instruments.

Furthermore, the injectors and nozzles are now made as plug-in type that makes it very easy for the users to change the setup in the rack. Also we have changed, where possible, the materials from stainless to a softer material in order to protect the instruments.

Take a look at the following pages and feel free to contact us if any questions.



BASIC NOZZLE, LONG
For tubular instruments, max Ø13 mm.
Sleeve length 55 mm. for MIS rack and modules. ref. 2900807



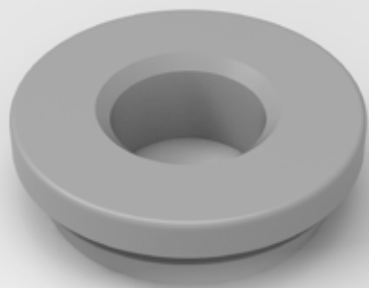
BASIC NOZZLE, SHORT
For tubular instruments, max Ø13 mm.
Sleeve length 27 mm. for MIS rack and modules. ref. 2900808



JET SPIKE
For cow insemination. ref. 2991000



BLINDPLUG
For distributor tube. ref. 7609410



GROMMET

For connecting MIS-nozzles/
injectors

Grommet for connecting MIS-nozzles
/injectors for MIS-rack and modules.
ref. 2900811



INJECTOR

For hoses

Injector for hoses $\text{\O}4\text{mm}$ 110mm.
ref. 2908255



INJECTOR LANCE

Injector lance for ventilation bags.
ref. 2908265

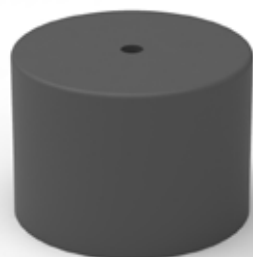
1



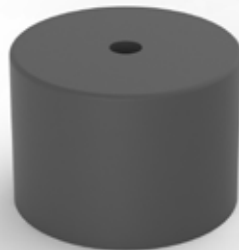
2



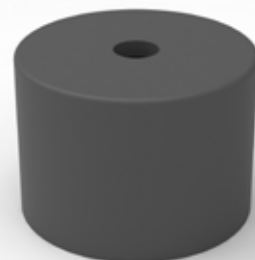
3



4



5



6



7



8



9



1. Caps for basic nozzle Ø3-Ø8. ref 2900802
 2. Caps for basic nozzle Ø6-Ø11. ref. 2900803
 3. Caps for basic nozzle Ø2. ref. 2900804

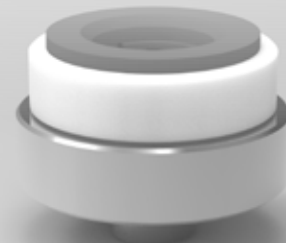
4. Caps for basic nozzle Ø3. ref 2900805
 5. Caps for basic nozzle Ø4. ref. 2900806
 6. Blindplug. ref. 7610777

4. Injector nozzle Ø4 open top. Length 120 mm.
 for MIS rack and modules. ref. 2908428
 5. Injector nozzle Ø4 closed top. Length 120
 mm. for MIS rack and modules. ref. 2908426
 6. Injector nozzle Ø2,6 Length 50 mm. for MIS
 rack and modules. ref. 2908441

IQ4 OTHER ACCESSORIES

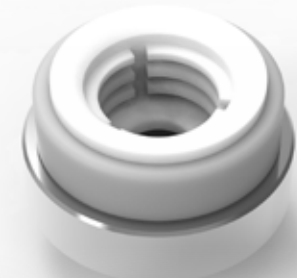
KEN HYGIENE SYSTEMS is always developing and adapting to the world surrounding us. Therefore we have a continuous development of our various accessories. To the left you will find the most common and likely to be of your interest.

We strive to always be up to date with our product program, and we are always designing our accessories to be compatible with existing holders and spikes. If in any doubt, please do not hesitate to seek out counselling and contact our experts at KEN HYGIENE SYSTEMS or partners.



DENTAL NOZZLE
Ø16

Dental nozzle. Ø16
ref. 2908430



DENTAL NOZZLE
Ø20

Dental nozzle. Ø20
ref. 2908431



SPRING CLIP
For breathing tubes

Injector nozzle Ø4 open top.
Length 120 mm. for MIS rack
and modules.
ref. 2908428



KIT
For instrument support

Kit for instrument support
ref. 2908554



**LOADING/UNLOADING
ARM**

Loading/unloading arm for racks.
"Assistant" for loading and unloading.
ref. 2908556

IQ4 TROLLEY

The manual transport trolley is connected to the machine and locks itself firmly to the machine. It can be loosened and released with a single hand and is very user-friendly.



**MANUAL LOADING
TROLLEY**

Manual loading trolley. For assembly.
ref- 2928117

IQ5 RACKS

The rack for KEN IQ5 is designed in stainless steel. It is fitted with a top load indicator, so that the instruments are not damaged when it is pushed into the washing chamber. It is aligned with 8 wheels that ensure a smooth, silent and safe transportation in and out of the washing chamber.

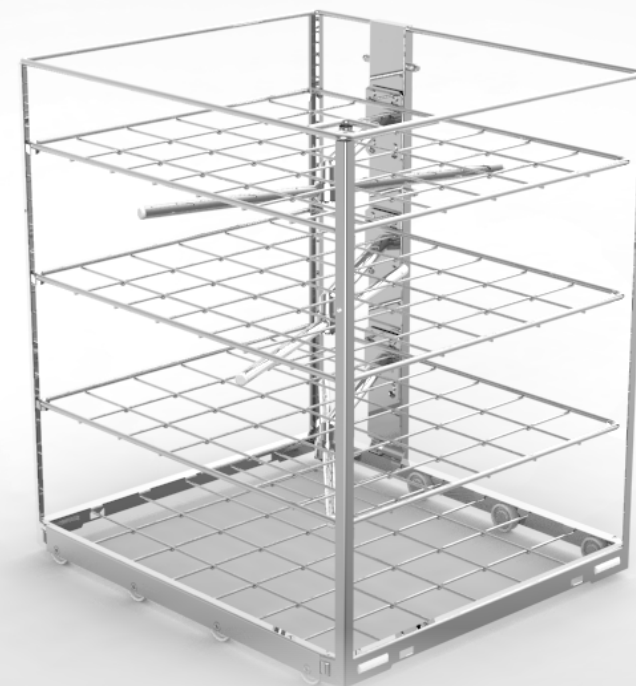
It is designed to wash in up to 6 levels. All levels have internal washing and drying. The shelves can be equipped with modules, distributors and injectors that you will find on the next pages. Every injector is connected not only to the internal water pump system for washing but also to the hot air blower motor, so every piece of equipment will be washed and dried from the inside as well as the outside.



FLEXPLUS RACK
For washing in 5 levels

FlexPLUS rack for washing in 5 levels.
ref. 2908524

FlexPLUS rack for washing in 5 levels for
monitoring of rotation of washing arms.
ref. 2908706



FLEXPLUS RACK
For washing in 4 levels

FlexPLUS rack for washing in 4 levels.
ref. 2908529

FlexPLUS rack for washing in 4 levels for
monitoring of rotation of washing arms.
ref. 2908707



RACK
For washing in 4 levels

Rack for washing in 4 levels. ref. 2908022

Rack for washing in 4 levels for monitoring
of rotation of washing arms. ref. 2908702



RACK
For washing in 5 levels

Rack for washing in 5 levels. ref. 2908019

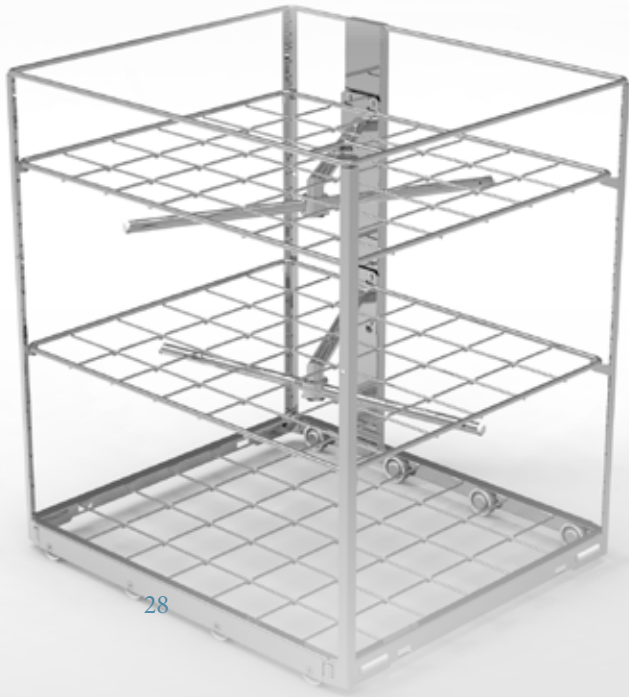
Rack for washing in 5 levels for monitoring
of rotation of washing arms. ref. 2908701



RACK
For washing in 6 levels

Rack for washing in 6 levels. ref. 2908009

Rack for washing in 6 levels for monitoring
of rotation of washing arms. ref. 2908700



FLEXIBLE RACK
For washing in 3 levels

Flexible rack for washing in 3 levels.
ref. 2908464

Flexible rack for washing in 3 levels for
monitoring of rotation of washing arms.
ref. 2908705



FLEXIBLE RACK
For washing in 4 levels

Flexible rack for washing in 4 levels.
ref. 2908169

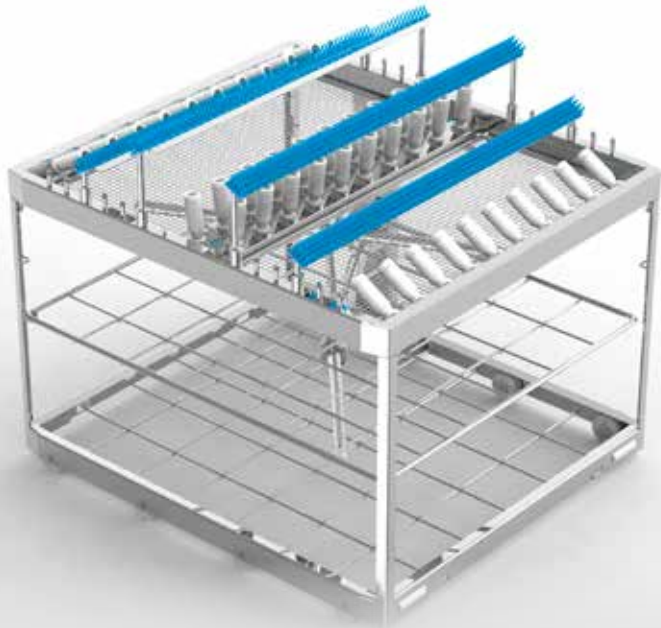
Flexible rack for washing in 4 levels for
monitoring of rotation of washing arms.
ref. 2908704



FLEXIBLE RACK
For washing in 5 levels

Flexible rack for washing in 5 levels.
ref. 2908681

Flexible rack for washing in 5 levels for
monitoring of rotation of washing arms.
ref. 2908703



MIS RACK
Complete

MIS rack standard complete, grommet.
Including 40 basic nozzles. ref. 2908687

MIS rack standard for monitoring of
rotation of washing arms. ref. 2908709



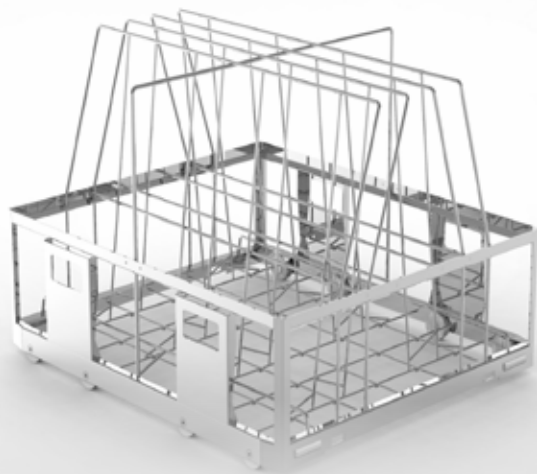
RACK FOR 3MACH
For washing in 4 levels

Rack for 3Mach for washing in 4 levels for
monitoring of rotation of washing arms.
ref. 2908708

Monitoring of washing arms

By monitoring the washing arms, it is ensured that the washing arms rotate during the washing phase. Rotation of the washing arms is important to ensure a properly performed washing and drying process.

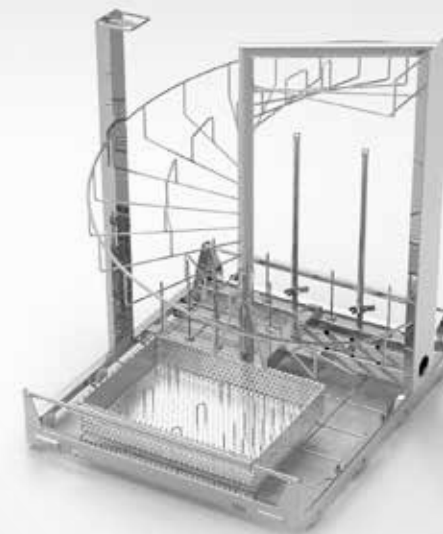
Without the monitoring, you can not be sure that the goods are being washed properly. Thus this ensures maximum monitoring of the washing process.



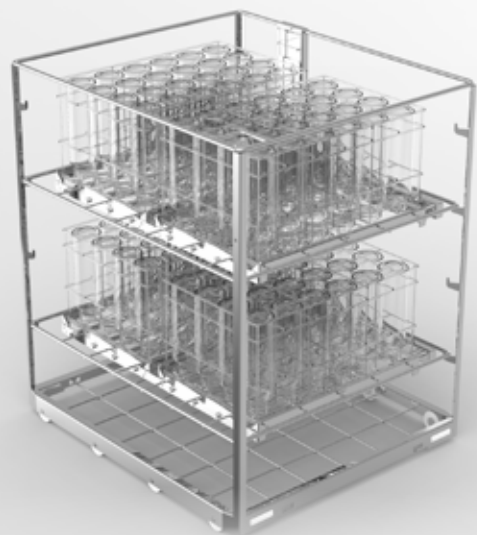
CONTAINER RACK
Container rack 600x300x150
ref. 2908199



CONTAINER RACK
Container rack 600x300x300
ref. 2908200



ANAESTHESIA RACK
Anaesthesia rack complete for IQ5, 4 sets.
ref. 2908689



RACK
Rack for 96 Babybottles 250 ml.
ref. 2908696



RACK
Rack for 96 Babybottles 125 ml.
ref. 2908697



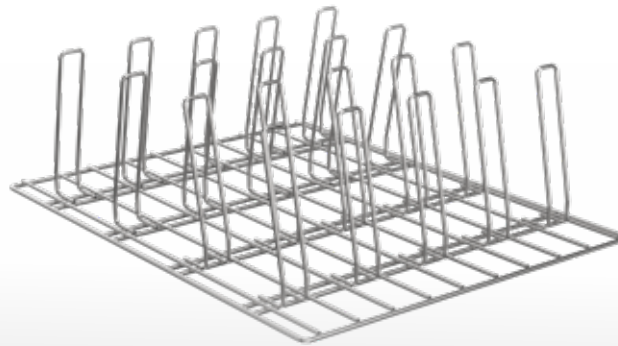
DA VINCI RACK
Da Vinci rack without holders Si, Xi.
ref. 2908264



IQ5 MODULES AND SUPPORT

The modules for the base rack are designed for the general or specific need. The idea of using modules for the base rack is to avoid heavy lifting and thus ensure the best ergonomic working environment for the user. The modular system also creates a great flexibility in terms of changing to a different load of goods.

Also, the modular system ensures that you can easily adapt to the future if you should have a change in your daily routines.



SUPPORT
For 20 psc. OP-shoes

Support for 20 psc. OP-shoes / 2
per rack for 5 and 4 levels flexible
rack.
ref. 2908247



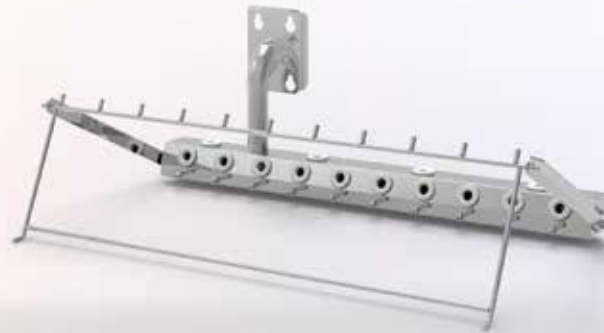
FINE FILTER MODULE
For Dental and Ophthal units

Fine filter module for Dental and
Ophthal units w/o units for 5
levels rack.
ref. 2908539



MIS MODULE
24 connections for 5 level racks

MIS module 24 connections w/o nozzles for 5 level flex. rack, 14 nozzles to be defined.
ref. 2908375



MIS MODULE
24 connections for 4 level racks

MIS module 24 connections w/o nozzles for 4 level flex. rack, 14 nozzles to be defined.
ref. 2908486



SUPPORT
For baby bottles

Support for baby bottles 250 ml.
ref. 2908298



MIS UNIT

MIS unit 10 connections w/o nozzles for fine filter module.
ref. 2908640



SUPPORT FOR
4 washing bowls

Support for 4 washing bowls / 2 per level for 5 and 4 levels flexible rack
ref. 2908228



SUPPORT FOR
6 kidney bowls

Support for 6 kidney bowls / 2 per level for 5 and 4 levels flexible rack
ref. 2908239

1



2



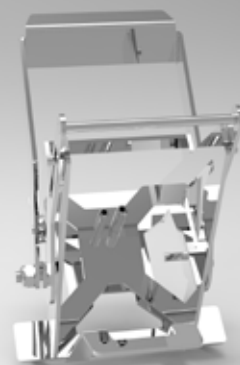
3



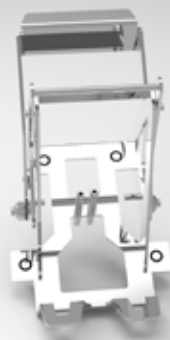
4



5



6



1. Da Vinci Si holder 8/5 mm 10/rack. 14 holders per rack. ref. 2908319
2. Da Vinci single site holder. 10 holders per rack. ref. 2908323
3. Da Vinci Si stapler holder. 10 holders per rack. ref. 2908331

4. Kit for cleaning power tools Stryker or Colibri for MIS rack. ref. 2908314
5. Da Vinci Xi holder 8 mm and single site instrument. 10 holders per rack. ref. 2908673
6. Da Vinci Xi stapler holder. 10 holders per rack. ref. 2908674



IQ5 DISTRIBUTORS

The distributors are designed to give optimum flexibility. It comes in two types. Either with fixed spikes or with threaded connections for holders. This gives the possibility to optimize the flexibility. The rack or module can be equipped with specialised distributors.

The flexibility makes it easy to adapt to a different lot of goods. Unlike other racks you only change or apply one or maybe two distributors and your interior rack design changes completely. This procedure is easily done and without heavy lifting of any kind.

Furthermore the hospital saves a lot of storage space, as the rack design is so flexible. Thus you only need one rack and a few extra distributors to be able to accommodate a great variety of surgical instruments and other equipment.



DENTAL UNIT

8 pcs Ø16

Dental unit for 2908539. 8 pcs Ø16
adapters. 2 units per module.
ref. 2908432



DISTRIBUTOR UNIT

8 pcs Ø20

Dental unit for 2908539. 8 pcs Ø20
adapters. 2 units per module.
ref. 2908506



DENTAL UNIT

4 pcs Ø16 and 4 pcs Ø20

Dental unit for 2908539. 4 pcs Ø16
and 4 pcs Ø20. 2 units per module.
ref. 2908508



OPHTHAL UNIT

2 units per module

Ophthalm unit for 2908539. 2 units
per module.
ref. 2908519

IQ5 INJECTORS & NOZZLES

KEN HYGIENE SYSTEMS has always offered a wide range of injectors and nozzles.

Along with our new range of Washer Disinfectors, we have gathered years of know-how and redeveloped our range of injectors and nozzles to cover the need for reprocessing cannulated instruments.

Further the injectors and nozzles are now made as plug-in type which makes it very easy for the users to change the setup in the rack. Also we have changed, where possible, the materials from stainless to a softer material in order to protect the instruments. Take a look at the following pages and feel free to contact us if any questions.



INJECTOR SPIKES Ø4

Injector spikes for tubes Ø4 for
Anaesthesia rack.
ref. 2908255



SPIKE FOR RESPIRATOR

Spike (screw) for respirator bellow
for Anaesthesia rack.
ref. 2908265



BASIC NOZZLE
LONG

Basic nozzle, long, for tubular instru-
ments, max Ø13 mm. Sleeve length
55 mm. for MIS rack and modules.
ref. 2900807



BASIC NOZZLE
SHORT

Basic nozzle, short, for tubular
instruments, max Ø13 mm. Sleeve
length 27 mm. for MIS rack and
modules.
ref. 2900808



INJECTOR NOZZLE
Ø2,6

Injector nozzle Ø2,6. Length 50 mm.
for MIS rack and modules.
ref. 2908441



INJECTOR NOZZLE
CLOSED

Injector nozzle Ø4 closed top.
Length 120 mm. for MIS rack
and modules.
ref. 2908426



INJECTOR NOZZLE
OPEN

Injector nozzle Ø4 open top.
Length 120 mm. for MIS rack
and modules.
ref. 2908428

1



2



3



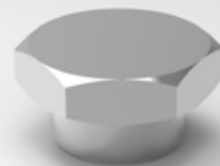
4



5



6



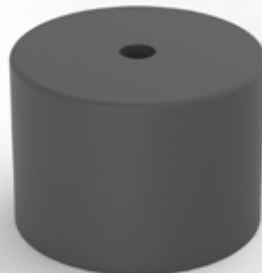
1. Basic nozzle screw for tubular instruments.
ref. 2900469
2. Nozzle universal screw for tubular instruments.
ref. 2908184
3. Injector nozzle screw Ø4 closed.
ref. 2908283

4. Injector nozzle screw Ø4.
ref. 2908364
5. Injector nozzle screw Ø2,6.
ref. 2908439
6. Blind plug for unused injector positions
(thread) for MIS-rack and modules.
ref. 8300091

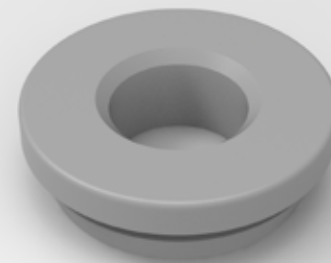
1



4



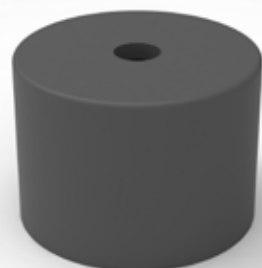
7



2



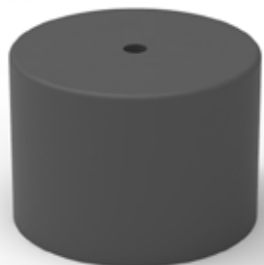
5



8



3



6



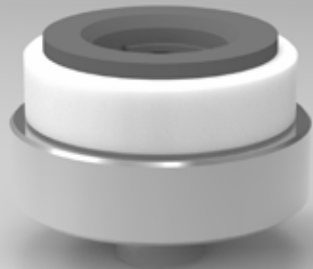
9



- 1. Caps for basic nozzle Ø3-Ø8. ref. 2900802
- 2. Caps for basic nozzle Ø6-Ø11. ref. 2900803
- 3. Caps for basic nozzle Ø2. ref. 2900804

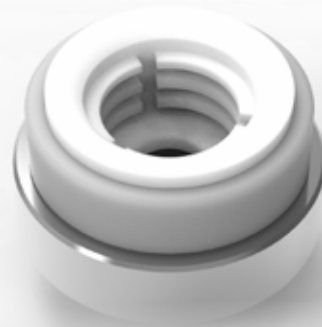
- 4. Caps for basic nozzle Ø3. ref. 2900805
- 5. Caps for basic nozzle Ø4. ref. 2908006
- 6. Blindplug. ref. 7610777

- 7. Grommet for connecting MIS nozzle/injector for MIS rack and modules. ref. 2900811
- 8. Jet spike for cow insemination. ref. 2991000
- 9. Blind plug for distributor tube. ref. 2908431



DENTAL NOZZLE
Ø16

Dental nozzle. Ø16.
ref. 2908430



DENTAL NOZZLE
Ø20

Dental nozzle. Ø20.
ref. 2908431





IQ5 OTHER ACCESSORIES

KEN HYGIENE SYSTEMS is always developing and adapting to the world surrounding us. Therefore we also have a continuous development of accessories. To the right you will find the most common and likely to be of your interest.

We strive to always be up to date with our product program. We are always designing our accessories to be compatible with existing holders and spikes. If in any doubt, please do not hesitate to seek out counseling and contact our experts at KEN HYGIENE SYSTEMS or partners.

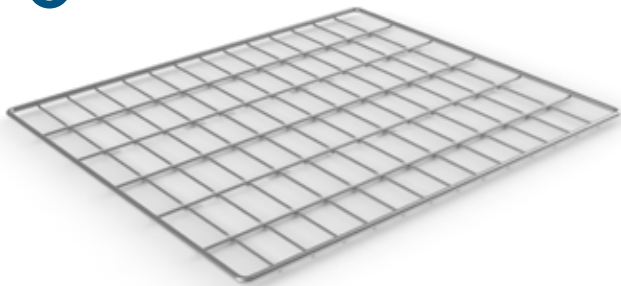
1



2



3



4



5



6



7



8



9



- 1. RFID-kit for rack for containers. ref. 2908339
- 2. Ophthal nozzle fine mesh filter with 2 pcs. female luerlock, ref. 2908374 ref. 2908373
- 3. Fine mesh grate for racks. ref. 2908469

- 4. RFID-kit for MIS-rack. ref. 2908470
- 5. Kit for instruments support. ref. 2908554
- 6. Loading/Unloading arm. "Assistant" for loading/unloading of racks. ref. 2908556

- 7. Spring clip for breathing tubes. ref. 2901160
- 8. RFID transmitter for load carriers. ref. 2908277
- 9. Replacement filter gasket for units. For finefilter module. ref. 7608662

IQ5 TROLLEYS

KEN HYGIENE SYSTEMS has a wide range of logistics solutions. It extends from the simple solution to the fully automated logistic solution with robotics and related buffer stations, monitoring screens and terminal tablets.

The manual transport trolley is connected to the machine and locks itself firmly to the machine. It can be loosened and released with a single hand and is very user-friendly.

The electronically adjustable transport trolley works more or less in the same way as the manual trolley, but can be adjusted in height. It has several pre-programmed fix heights and it can easily and quickly be programmed on site. The height adjustment is electronic and very ergonomic.



MANUAL LOADING
TROLLEY

Manual loading trolley for sliding
door models.
ref. 2908117



HEIGHT ADJUSTABLE
TROLLEY

Height adjustable trolley.
ref. 7610257

IQ6 RACKS

The rack for KEN IQ6 is designed in stainless steel. It is fitted with a top load indicator, so that the instruments are not damaged when it is pushed into the washing chamber. It is aligned with 8 wheels that ensures a smooth, silent and safe transportation in and out of the washing chamber.

It is designed to wash up to 6 levels. All levels has internal washing and drying. The shelves can be equipped with modules, distributors and injectors that you will find on the next pages. Every injector is connected not only to the internal water pump system for washing but also to the hot air blower motor, so every instrument or equipment will be washed and dried both form the inside as well as the outside.

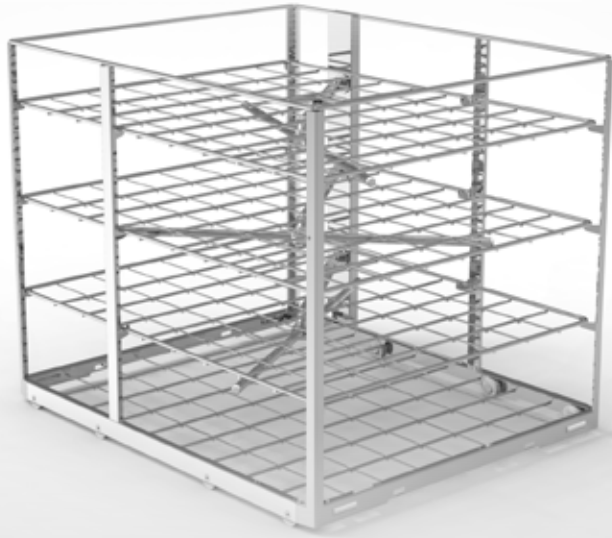


MIS RACK
Complete

MIS rack complete, standard. Including 56 basic nozzles. ref. 2918687

MIS rack for sprayarm monitoring.ref. 2918709

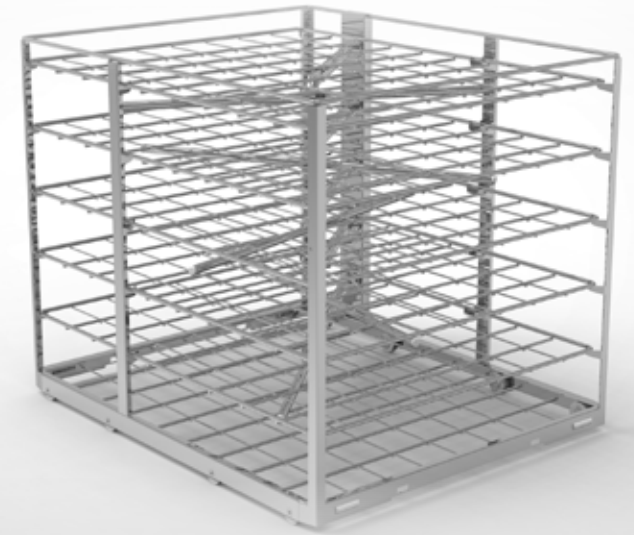
MIS rack for AL10 compability. ref. 5428138



RACK
For washing in 4 levels



RACK
For washing in 5 levels



RACK
For washing in 6 levels

Rack for washing in 4 levels.
ref. 2918680

Rack for washing in 5 levels.
ref. 2918679

Rack for washing in 6 levels.
ref. 2918678



FLEXIBLE RACK
For washing in 3 levels

Flexible rack for washing in 3 levels. ref. 2918683
Flexible rack for sprayarm monitoring.ref. 2918705
Flexible rack for AL10 compability. ref. 5428107



FLEXIBLE RACK
For washing in 4 levels

Flexible rack for washing in 4 levels. ref. 2918682
Flexible rack for sprayarm monitoring.ref. 2918704
Flexible rack for AL10 compability. ref. 5428128



FLEXIBLE RACK
For washing in 5 levels

Flexible rack for washing in 5 levels. ref. 2918681
Flexible rack for sprayarm monitoring.ref. 2918703
Flexible rack for AL10 compability. ref. 5428103

Monitoring of washing arms

By monitoring the washing arms, it is ensured that the washing arms rotate during the washing phase. Rotation of the washing arms is important to ensure a properly performed washing and drying process.

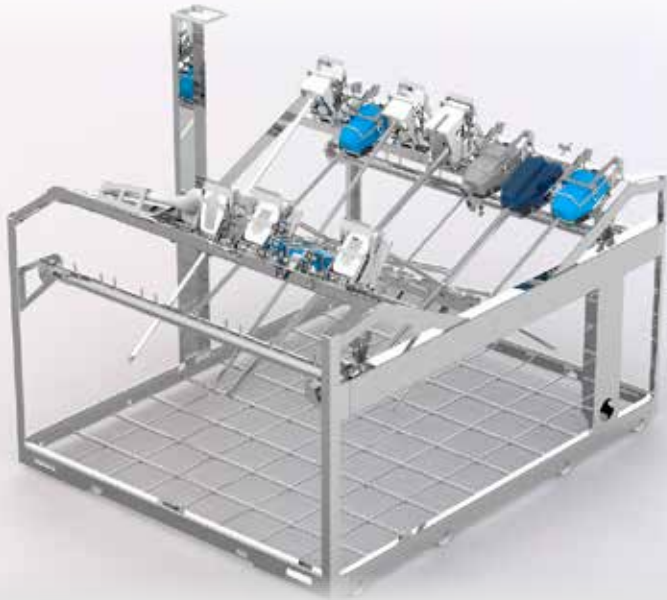
Without this monitoring, you cannot be sure that the goods are being washed properly. Therefore, this ensures maximum monitoring of the process.

Special wheel for AL10 compability

It is vital that the racks, which are handled by the AL10 system, have easy moving wheels with ball bearings.

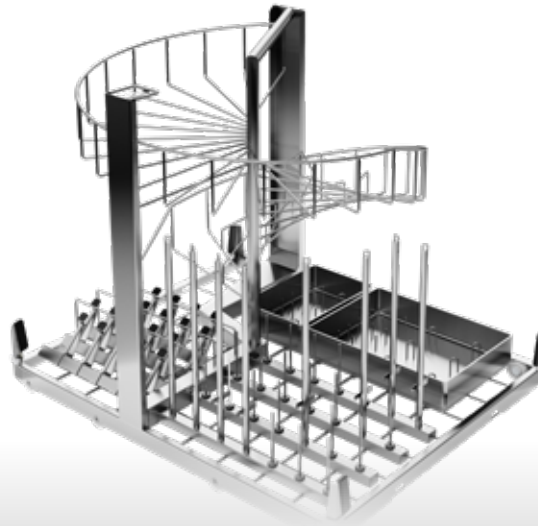
This is to ensure that the fully loaded rack can be moved with a maximum force of 150N. The use of other racks will cause the safety switch, in the transfer bar on the robot, to activate and cause a stop.



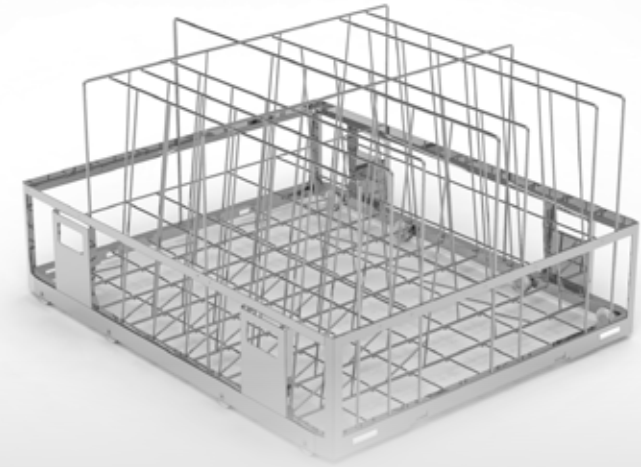


DA VINCI RACK

Da Vinci rack without holders Si, Xi.
ref. 2918692



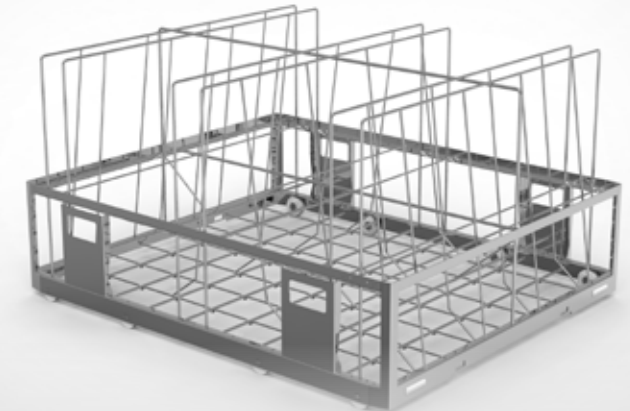
ANAESTHESIA RACK
Anaesthesia rack complete, 8 sets.
ref. 2918215



CONTAINER RACK
Container rack 600x300x150, 6 containers
and lid. ref. 2918199



5 LEVEL RACK
Rack for washing in 5 levels. FlexPLUS
(M8x1). ref. 2918524



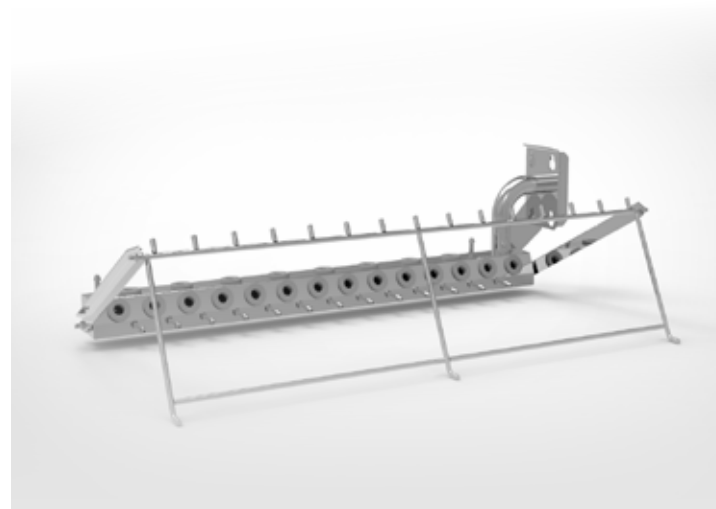
CONTAINER RACK
Container rack 600x300x300, 4 containers
and lid. ref. 2918200

IQ6 MODULES AND SUPPORT

The modules for the base rack are designed for the general or specific need. The idea of using modules for base rack is to avoid heavy lifting and thus ensure the best ergonomic work environment for the user. The module system also creates a great flexibility in terms of changing to a different load of goods.

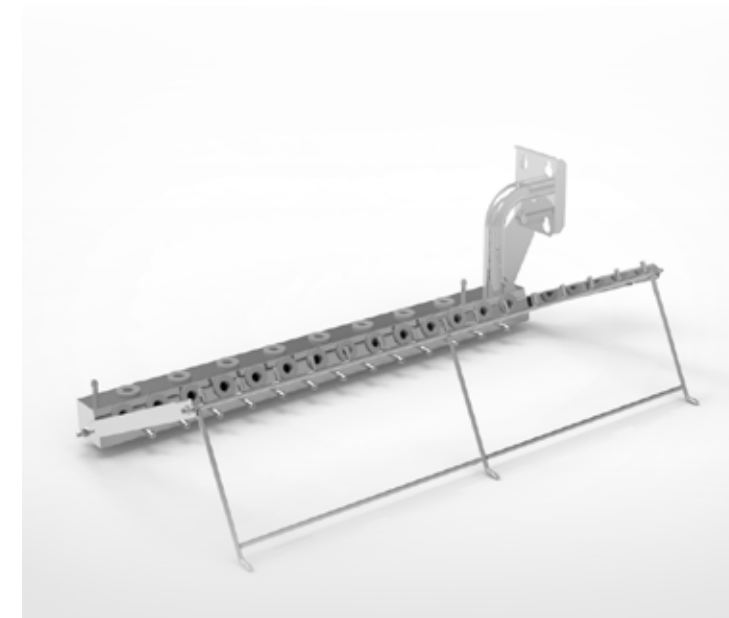
The module system ensures that you can easily adapt to the future if you should have a change in the hospital routine.

The modules for IQ6 is $\frac{1}{2}$ width of the rack. In this way one side of the rack can be equipped with 2 or 3 modules while the other side washes taller instruments that needs more space in the height. This allow you to use the same rack for different types of equipment. Thus the



MIS MODULE
37 connections for 5 level racks

MIS module short 37 connections w/o nozzles, grommet, for 5 level flex. rack. 22 selectable nozzles. ref. 2918375



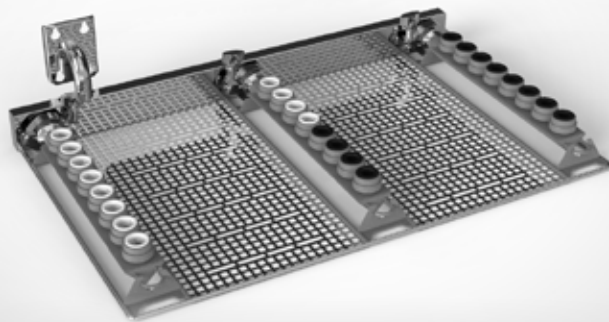
MIS MODULE
37 connections for 4 level racks

MIS module tall 37 connections w/o nozzles, grommet, for 4 level flex. rack. 22 selectable nozzles. ref. 2918486



MIS UNIT
10 connections

MIS unit for fine filter module
2918539.10 connections w/o
nozzles.
ref. 2908640



MODULE FOR
Dental- and ophthal units

Module for dental- and ophthal units
w/o units for 5 levels flex. rack. An
exampel to show the full capacity.
ref. 2918539



KIT FOR CLEANING
POWER TOOLS

Kit for cleaning power tools Stryker
or Colibri for MIS rack
ref. 2908314



SUPPORT FOR
4 washing bowls

Support for 4 washing bowls/ 3 per level for 5 and 4 levels flexible racks.
ref. 2908228



SUPPORT FOR
6 kidney bowls

Support for 6 kidney bowls/3 per level for 5 and 4 levels flexible racks.
ref. 2908239



SUPPORT FOR SHOES
18 psc. OP-shoes

Support for 18 OP-shoes / per rack.
ref. 2918247

1



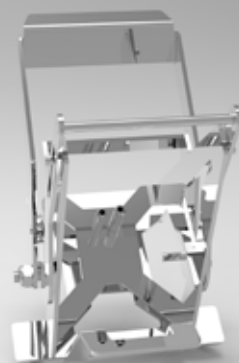
4



2



5



3



6



1. Da Vinci Si holder 8/5 mm 10/rack. 14 holders per rack. ref. 2908319
2. Da Vinci single site holder. 10 holders per rack. ref. 2908323
3. Da Vinci Si stapler holder. 10 holders per rack. ref. 2908331

4. Da Vinci XI optics holder / scopeholder. ref. 2918533
5. Da Vinci Xi holder 8 mm and single site instrument. 10 holders per rack. ref. 2908673
6. Da Vinci Xi stapler holder. 10 holders per rack. ref. 2908674

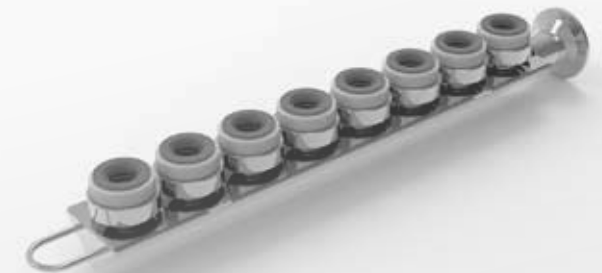


IQ6 DISTRIBUTORS

The distributors are designed to give optimum flexibility. It comes in two types. Either with fixed spikes or with threaded connections for holders. This gives the possibility to optimize the flexibility. The rack or module can be equipped with specialised distributors.

The flexibility makes it easy to adapt for a different lot of goods. Unlike other racks you only change or apply one or maybe two distributors and your interior rack design changes completely. This procedure is easily done and without heavy lifting of any kind.

Furthermore the hospital saves a lot of storage space, as the rack design is so flexible. Thus you only need one rack and a few extra distributors to be able to accommodate a great variety of surgical instruments and other equipment.



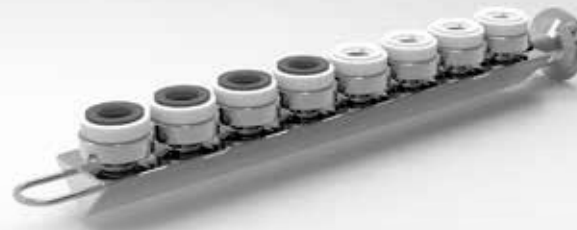
DENTAL UNIT Ø16

Dental unit for 2918539. 8 pcs Ø16 adapter. 3 units per module.
ref. 2908432



DENTAL UNIT Ø20

Dental unit for 2918539 8 pcs
Ø20 adapter. 3 units per module.
ref. 2908506



DENTAL UNIT
4 pcs Ø16 and 4 pcs Ø20

Dental unit for 2918539. 4 pcs Ø16
and 4 pcs Ø20. 2 units per module
ref. 2908508



OPHTHAL UNIT

Ophthalm unit for 2918539. 3 units
per module.
ref. 2908519

IQ6 INJECTORS & NOZZLES

KEN HYGIENE SYSTEMS has always offered a wide range of injectors and nozzles. Along with our new range of Washer Disinfectors, we have gathered years of know-how and redeveloped our range of injectors and nozzles to cover the need for reprocessing cannulated instruments.

Further the injectors and nozzles are now made as plug-in type which makes it very easy for the users to change the setup in the rack.

In addition, we have changed, where possible, the materials from stainless to a softer material in order to protect the instruments. Take a look at the following pages and feel free to contact us if you have any questions.



INJECTOR SPIKES
Ø4

Injector spikes for tubes Ø4 for Anaesthesia rack.
ref. 2908255



SPIKE FOR RESPIRATOR

Spike (screw) for respirator bellow for Anaesthesia rack.
ref. 2908265



**BASIC NOZZLE
LONG**

Basic nozzle, long, for tubular instruments, max Ø13 mm. Sleeve length 55 mm. for MIS rack and modules.
ref. 2900807



**BASIC NOZZLE
SHORT**

Basic nozzle, short, for tubular instruments, max Ø13 mm. Sleeve length 27 mm. for MIS rack and modules.
ref. 2900808



**INJECTOR NOZZLE
Ø2,6**

Injector nozzle Ø2,6. Length 50 mm. for MIS rack and modules.
ref. 2908441



INJECTOR NOZZLE
CLOSED

Injector nozzle Ø4 closed top.
Length 120 mm. for MIS rack
and modules.
ref. 2908426



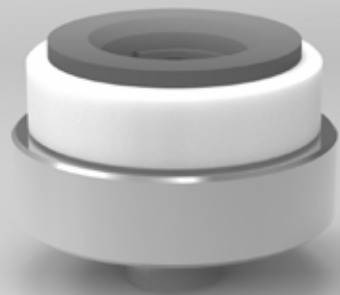
INJECTOR NOZZLE
OPEN

Injector nozzle Ø4 open top.
Length 120 mm. for MIS rack
and modules.
ref. 2908428



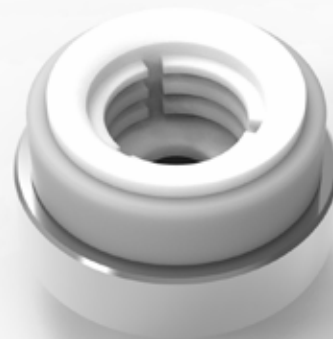
NOZZLE

Nozzle universal screw for tubular
instruments for old MIS rack and
module with screw.
ref. 2908184



DENTAL NOZZLE
Ø16

Dental nozzle Ø16.
ref. 2908430



DENTAL NOZZLE
Ø20

Dental nozzle Ø20.
ref. 2908431



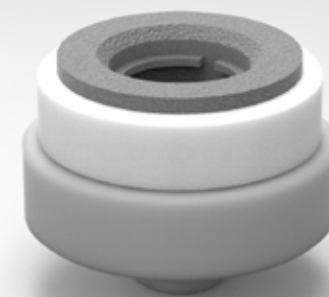
BASIC NOZZLE

Basic nozzle screw for tubular
instruments for old MIS rack and
module with screw.
ref. 2900469



DENTAL NOZZLE
Ø16

Dental nozzle Ø16. Threaded.
ref. 2908303



DENTAL NOZZLE
Ø20

Dental nozzle Ø20. Threaded.
ref. 2908304

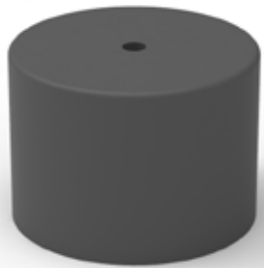
1



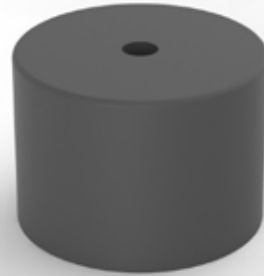
2



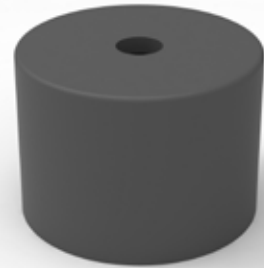
3



4



5



6



7



8



9



- 1. Caps for basic nozzle Ø3-Ø8. ref. 2900802
- 2. Caps for basic nozzle Ø6-Ø11. ref. 2900803
- 3. Caps for basic nozzle Ø2. ref. 2900804

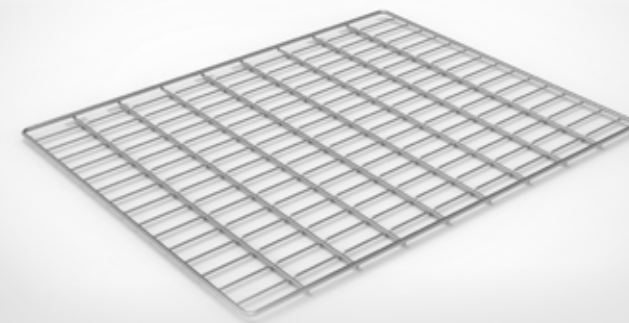
- 4. Caps for basic nozzle Ø3. ref. 2900805
- 5. Caps for basic nozzle Ø4. ref. 2908006
- 6. Blindplug. ref. 7610777

- 1. Injector nozzle screw Ø4 closed. ref. 2908283
- 2. Injector nozzle screw Ø4. ref. 2908364
- 3. Injector nozzle screw Ø2,6. ref. 2908439

IQ6 OTHER ACCESSORIES

KEN HYGIENE SYSTEMS is always developing and adapting to the world surrounding us. Therefore, we have a continuous development of accessories. To the right you will find the most common and likely to be of your interest.

We strive to always be up to date with our product program. We are always designing our accessories to be compatible with existing holders and spikes. If in any doubt, please do not hesitate to seek out counseling and contact our experts at KEN HYGIENE SYSTEMS or partners.



FINE MESH GRATE
For racks

Fine mesh grate for racks.
ref. 2918469

1



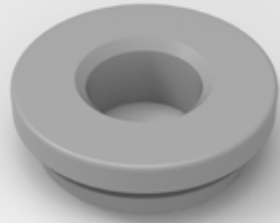
4



7



2



5



8



3



6



9



- 1. RFID-kit for Rack for containers. ref. 2908339
- 2. Grommet for connecting MIS-nozzle/injector. ref. 2900811.
- 3. Replacement filter gasket for units. For finefilter module. ref. 7608662

- 4. RFID-kit for MIC-rack. ref. 2918470
- 5. Kit for instruments support. ref. 2908554
- 6. Loading/Unloading arm. "Assistant" for loading/unloading of racks. ref. 2908556

- 4. IQ adapter M10x1 to grommet. ref. 2902468
- 5. IQ adapter M14x1 to grommet. ref. 2902469.
- 6. RFID transmitter for load carriers. ref. 2908277



RETURN HATCH

Return Hatch. ref. 5428206



RETURN HATCH
Extension for High Speed module

Return Hatch with extension for
High Speed Module. ref. 5428226



IQ6 TROLLEYS

KEN HYGIENE SYSTEMS has a wide range of logistics solutions. It extends from the simple solution to the fully automated logistic solution with robotics and related buffer stations, monitoring screens and terminal tablets.

The manual trolley is connected to the machine and it locks itself firmly to the machine. It can be loosened and released with a single hand and is very user-friendly.

The electronically adjustable transport trolley works more or less in the same way as the manual trolley, but can be adjusted in height. It has several pre-programmed fix heights and it can easily and quickly be programmed on site. The height adjustment is electronic and very ergonomic.



AUTOMATIC TROLLEY

Automatic loading table.
ref. 7609901



AUTOMATIC TROLLEY

Automatic unloading table.
ref. 7609902



AUTOMATIC ELEVATION
TROLLEY

Automatic elevation transport trolley.
ref. 7609529



MANUAL LOADING
TROLLEY

Manual loading trolley.
ref. 2919300



Packages

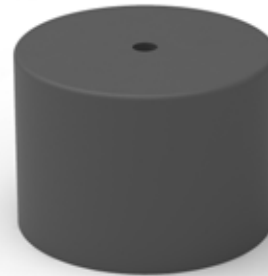
For injectors and nozzles for IQ MIS Racks and MIS Modules



ref. 2900802



ref. 2900803



ref. 2900804



ref. 2900808



ref. 7610777



ref. 2908426



ref. 2908428



ref. 2908441

PACKAGE 1 - 2990425: MIS-Modules and MIS-Rack

| Item no | Description | Numbers |
|---------|------------------------------------|---------|
| 2900808 | Basic nozzle, short | 3 |
| 2908441 | IQ - Injector nozzle ø2,6 | 5 |
| 2908428 | IQ - Injector nozzle ø4 open top | 2 |
| 2908426 | IQ - Injector nozzle ø4 closed top | 2 |
| 7610777 | Blind plug | 5 |
| 2900802 | Caps for basic nozzles ø3-ø8 | 5 |

Total numbers: 22

PACKAGE 3 - 2990427: MIS-Modules and MIS-Rack

| Item no | Description | Numbers |
|---------|------------------------------------|---------|
| 2900808 | Basic nozzle, short | 10 |
| 2908441 | IQ - Injector nozzle ø2,6 | 12 |
| 2908428 | IQ - Injector nozzle ø4 open top | 6 |
| 2908426 | IQ - Injector nozzle ø4 closed top | 6 |
| 7610777 | Blind plug | 10 |
| 2900802 | Caps for basic nozzles ø3-ø8 | 15 |
| 2900804 | Caps for basic nozzles ø2 | 15 |

Total numbers: 74

PACKAGE 2 - 2990426: MIS-Modules and MIS-Rack

| Item no | Description | Numbers |
|---------|------------------------------------|---------|
| 2900808 | Basic nozzle, short | 5 |
| 2908441 | IQ - Injector nozzle ø2,6 | 7 |
| 2908428 | IQ - Injector nozzle ø4 open top | 4 |
| 2908426 | IQ - Injector nozzle ø4 closed top | 3 |
| 7610777 | Blind plug | 8 |
| 2900802 | Caps for basic nozzles ø3-ø8 | 8 |
| 2900804 | Caps for basic nozzles ø2 | 8 |

Total numbers: 43

PACKAGE 4 - 2990428: MIS-Modules and MIS-Rack

| Item no | Description | Numbers |
|---------|------------------------------------|---------|
| 2900808 | Basic nozzle, short | 15 |
| 2908441 | IQ - Injector nozzle ø2,6 | 20 |
| 2908428 | IQ - Injector nozzle ø4 open top | 15 |
| 2908426 | IQ - Injector nozzle ø4 closed top | 15 |
| 7610777 | Blind plug | 30 |
| 2900802 | Caps for basic nozzles ø3-ø8 | 25 |
| 2900804 | Caps for basic nozzles ø2 | 25 |
| 2900803 | Caps for basic nozzles ø6-ø11 | 25 |

Total numbers: 170

Sustainability Statement

KEN HYGIENE SYSTEMS encourages a culture for sustainable development with a special attention to the UN Sustainable Development Goals No.'s 3, 8 and 12.

In the development of our machines, we show consideration for the environment and our customers by offering a very low consumption of water, chemistry and power. Furthermore, we ensure high productivity and an optimization of the work flow as well as deliver flexible solutions.

Safety, quality and the environment are key focus areas at KEN HYGIENE SYSTEMS A/S, and we work continuously with optimizations and improvements at all levels of the organization from sales and development through production, delivery and service.

KEN HYGIENE SYSTEMS

People and society depend on companies' ability to make responsible choices regarding hygiene and environment – and that companies are operated efficiently and competitively.

KEN HYGIENE SYSTEMS supplies top quality washing solutions to companies and healthcare services for cleaning critical equipment. Our solutions include everything needed to ensure efficient installation and operation – consulting, devices, documentation and servicing.

Our solutions are based on the needs of our customers and users. Our relationship with our customers is based on openness and trust in order for them to make informed choices and implement the best solutions.



ZIRBUS Technology Benelux B.V.
Stephensonstraat 13
4004 JA Tiel, Netherlands

Telephone +31 (0)344 – 63 28 16
Telefax +31 (0)344 – 61 86 67
E-Mail info@zirbus.nl
Internet www.zirbus.nl

